

EM-202

Dual channel beltpack



ALTAIR EM-202 beltpack allows independent or simultaneous communication with two separate intercom channels.

The unit has been designed for intensive use in portable applications. A highly resistant plastic belt clip allows easy and comfortable beltpack adjustment. Call signalling is both visual and audible (both functions can be turned ON & OFF independently). This unit can be adjusted to be used with dynamic or *electret* microphones, allowing the use of different types of headset in the market. Listening balance between both channels (A/B) can be adjusted using a miniature fader.

This beltpack is available in two different versions: *EM-202-3P*, featuring 2 x 3-pin XLR connectors (one for each channel) and *EM-202-5P*, equipped with 2 x 5-pin connectors (both channels in the same connector). *EM-202-5P* allows the user to daisy-chain several units, while *EM-202-3P* is usually connected at the end of two intercom lines (A/B).

When using an *EM-202-3P* beltpack, an accessory splitter (*3MFM-200*) is necessary to continue the intercom line to other beltpacks (one splitter for each channel).

Specifications

Powering: 12-32V, nom. 24V/50mA.

Connections: intercom line: XLR3 or XLR5 (depending on model).

Headset: XLR-4M.

Dimensions/weight: 84x38x105mm/ 270 gr Net.



EM-202-3P



EM-202-5P

Key features

- Dual channel beltpack
- Listen balance adjustment (A, A+B, B).
- Metallic (Aluminium) low weight enclosure. Oval shaped. Plastic belt clip.
- On/Off MIC switch function (*push-to-talk* and latching options).
- Remote "MIC KILL" function (all mics off).
- Remote "BUZZ KILL" function (all buzzers off).
- Bright "CALL" switch with signalling led for each channel.
- Microphone limiter for ear protection and fatigue-free communication.
- External access for presets setup (MIC gain, *phantom*, limiter...)

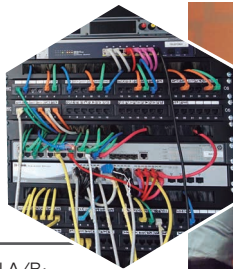
5P3-202

5pin-3pin splitter/combiner

Specifications

Connectors: Channels A & B: XLR-3M + XLR-3F; Channel A/B: XLR-5M+XLR-5F.

Dimensions/weight: 84x38x105mm/ 225 gr Net.



Interface to convert 2 separate 3-pin cables (one intercom channel in each one) into one single 5-pin cable with 2 separate intercom channels in it. The unit can also operate the other way around.

This unit can be used to simplify the installation when a dual channel beltpack must be placed far away from the base station. Using this device we will save lots of cable and the user will benefit from the possibility of daisy-chaining several dual channel beltpacks (*EM-202-5P* model).

The unit features an extension connector and a "power" led indicator per channel.

