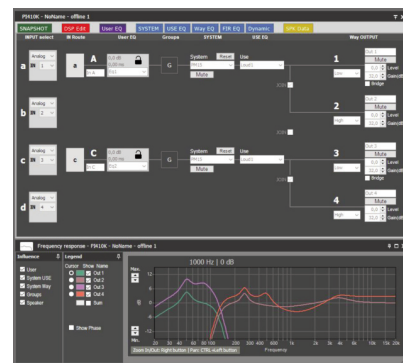
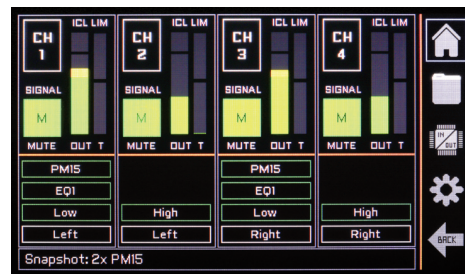


- Large IPS display, capacitive touch panel user interface
- 64 bit double-precision 96kHz DSP process
- Optional Dante™ Networking (AES67) and AES3 Digital inputs
- Two ports Ethernet and USB port for DSP control
- Low weight high efficiency class D topology
- Universal power supply with PFC
- Up to 20000 W in 4 channels
- 8, 4 and 2 Ohm low impedance operation
- 100, 70, 50 and 35 V high impedance modes
- RAM Audio advanced Power Control Management (PCM™)
- Neutrik® XLR and Speakon® connectors
- Up-side-down design to avoid fan dust accumulation
- Temperature controlled, front to back cooling fan
- Neutrik® PowerCon connector (32A for 20K model)

DSP management: RAM OCS and amplifier display:

Two general working modes: User and Advanced (manufacturer)

- User functionalities:
 - Input Routing matrix Analog/Dante/AES3
 - Input EQ section with 8 filters and 20 memories
 - Input EQ Mode section, predefined by the manufacturer
 - System Preset selection predefined by the manufacturer (Locked/Unlocked)
 - Snapshot library management up to 20 presets
 - Master Control Groups
- Advanced functionalities (manufacturer):
 - Input EQ Mode section creation, up to 20 presets
 - Ways routing section (Locked/Unlocked)
 - IIR EQ section: XOver, Gain, Delay, and 7 EQ filters
 - FIR EQ section: linear phase XOver and EQ filters, or custom up to 1000 taps
 - RMS and Peak Dynamic control
 - Snapshot library management up to 20 presets (Locked/Unlocked)
 - System Preset library management up to 100 pre-sets
 - 5 Security levels definition to limit final user functionality



OUTPUT POWER	DALIM-5Q	DALIM-10Q	DALIM-14Q	DALIM-20Q
2 ohms	4x 1250 W	4x 2500 W	4x 3500 W	4x 5000 W
4 ohms	4x 1250 W	4x 2500 W	4x 3500 W	4x 5000 W
8 ohms	4x 1250 W	4x 1250 W	4x 1800 W	4x 2500 W
Hi-Z 100V	4x 1250 W	4x 2500 W	4x 3500 W	4x 5000 W
	1x 2500 W	1x 2500 W	1x 4200 W	1x 5000 W
Hi-Z 70V	4x 1250 W	4x 2500 W	4x 2950 W	4x 3500 W
	1x 1800 W	1x 2500 W	1x 2950 W	1x 3500 W

DSP Specifications - RAM_OCS Control

Overall:

- High performance 96kHz/24 bits AD/DA converters
- 64 bit double-precision 96kHz DSP process
- 0.85 ms minimum process latency time
- Custom FIR process up to 1000 taps
- Dante and AES3 input versions

Input Section (x4):

- Gain, Mute and Phase inversion
- Delay: in In A: 333ms (114m), In B/C/D: 90ms (31m)
- Input EQ: 16 filters (Param., Shelving, LP, HP, BP, SB, AP)

Output Section (x4):

- Crossover Filters: FIR and IIR (up to 48dB/oct, Butterw./LR/Bessel)
- Output Delay: 0 to 31 meters (90ms) per channel
- Output IIR EQ: 12 filters per channel (Param., Shel, LP, HP, BP, SB, AP)

- Output FIR EQ: 20 filters per channel (Parametric, Shelving, LP, HP, BP, SB, AP), or Custom. Up to 1000 taps
- RMS and Peak limiter per channel

Communications:

- Two ports Ethernet switch for daisy chain connection
- USB 2.0 Type B port

Miscellaneous:

- 100 Manufacturer system preset memories library
- 20 User preset memories library
- 20 User snapshot memories library
- Manufacturer/User passwords
- User control groups for virtual Equalization, Gain and Delay
- Zones definition for library management and alerts information
- Smaart® analysis software integration

DALIM Technical Specifications

	DALIM-5Q	DALIM-10Q	DALIM-14Q	DALIM-20Q
Number of channels	4	4	4	4
Total output power	5000 W	10000 W	14000 W	20000 W
Output Power* (All ch driven/single ch)				
2 ohms	4x 1250 / 1x 1250 W	4x 2500 / 1x 2500 W	4x 3500 / 1x 3500 W	4x 5000 / 1x 5000 W
2.67 ohms	4x 1250 / 1x 1700 W	4x 2500 / 1x 3300 W	4x 3500 / 1x 4700 W	4x 5000 / 1x 6700 W
4 ohms	4x 1250 / 1x 2500 W	4x 2500 / 1x 2500 W	4x 3500 / 1x 3750 W	4x 5000 / 1x 6000 W
8 ohms	4x 1250 / 1x 1250 W	4x 1250 / 1x 1300 W	4x 1800 / 1x 1900 W	4x 2500 / 1x 3000 W
4 ohms Bridged	2x 2500 W	2x 5000 W	2x 7000 W	2x 10000 W
8 ohms Bridged	2x 2500 W	2x 5000 W	2x 7000 W	2x 10000 W
Hi-Z 100V	4x 1250 / 1x 2500 W	4x 2500 / 1x 2500 W	4x 3500 / 1x 4200 W	4x 5000 / 1x 5000 W
Hi-Z 70V	4x 1250 / 1x 1800 W	4x 2500 / 1x 2500 W	4x 2950 / 1x 2950 W	4x 3500 / 1x 3500 W
Max output voltage	150 V _{peak}	150 V _{peak}	189 V _{peak}	235 V _{peak}
Max output current	36 A _{peak}	50 A _{peak}	59 A _{peak}	71 A _{peak}
Total Harmonic Distortion		<0.05%		
Crosstalk (20Hz-1kHz), typical		>70dB		
Voltage Gain		26dB to 44dB		
SNR	111 dBA	111 dBA	113 dBA	115 dBA
Required AC Mains		90V-265V AC		
Operating Voltage (50Hz-60Hz)				
1/8 Rated Power (@230V, 4 ohms)	3.7 A	7.3 A	10 A	14 A
Dimensions W x H x D	483x89x355 mm - 19"x3.5"x14"			
Weight Net (kg-Lb)	7-15.4	7-15.4	9-19.8	9-19.8
Protections: Soft-start, Turn-on Turn-off transients, Muting at turn-on, Over-heating, DC, RF, Short-circuit, Open or mismatched loads, Overloaded power supply, ICL™, PCM™				

* IEC filtered pink noise signal (40Hz-5kHz, 12dB crest factor). 230V AC mains.

Dante™
AES67



©2023 by C.E. Studio-2 s.l. Pol.Ind. La Figuera - C/Rosa de Luxemburgo nº34 - 46970 Alaquas - Valencia - SPAIN
Phone: +34 96 127 30 54 - ramaudio.com - e-mail: info@ramaudio.com

RAM Audio®, PCM™, ICL™ and QuantaPulse™ are registered trademarks of C.E. Studio-2 s.l.. All other names are trademarks of their respective companies.